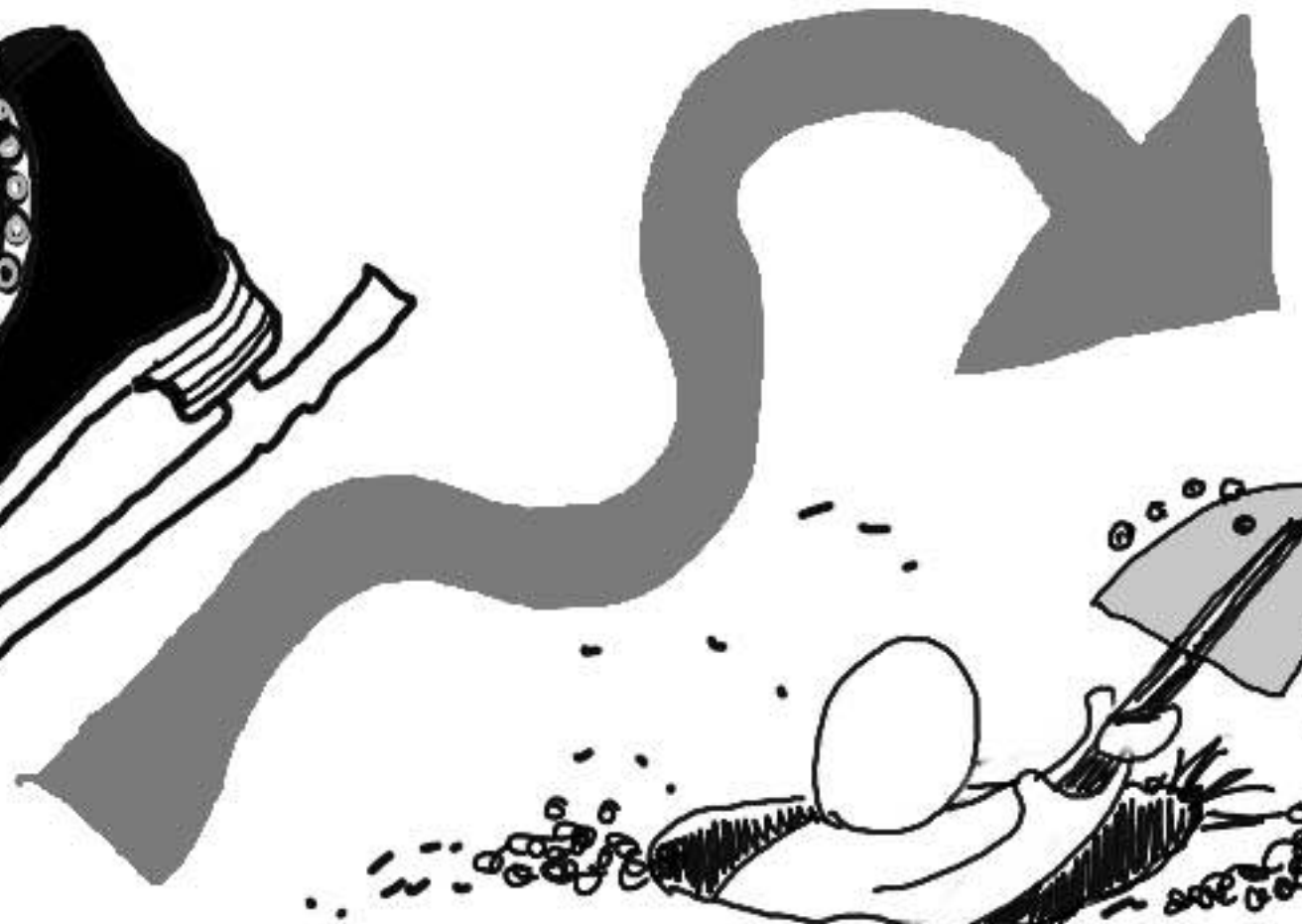


1

Establish current position and what might be causing any problems



analytical

logical

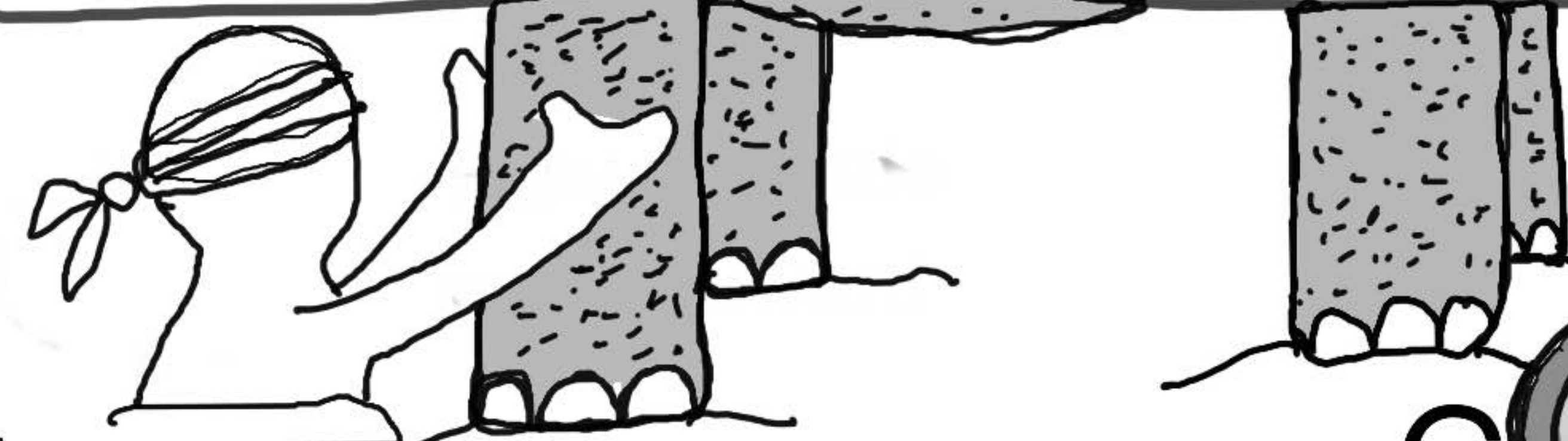
creative

positive

absolute

rational

- What's missing?
- Look at the big picture
- Multi-solution approach
- Other things to consider collaborate?
- Pros / Cons
- Optimal solution

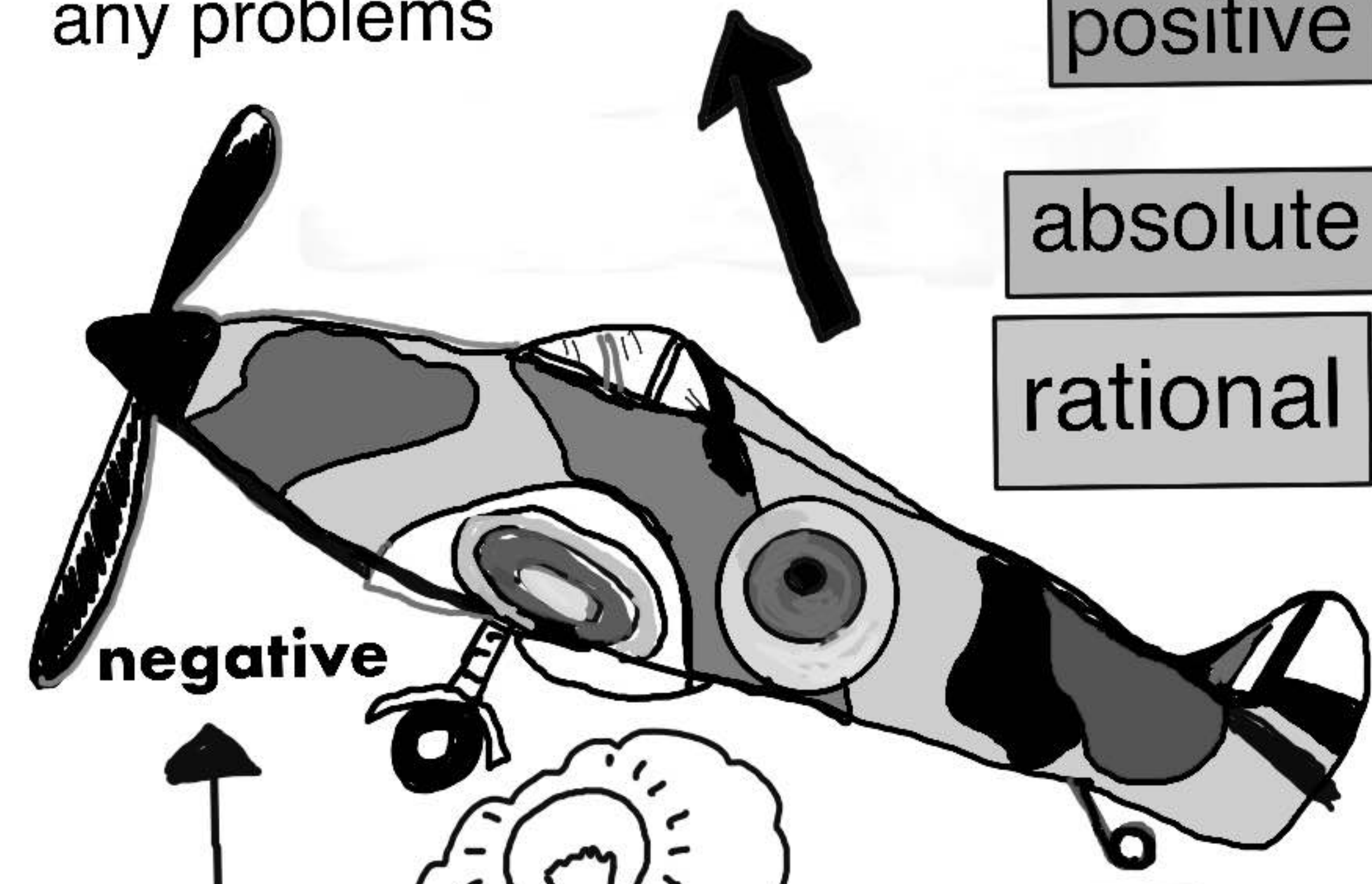


2

Fully evaluate ways forward



W? Which one



negative

positive

thankfulness



What is working?

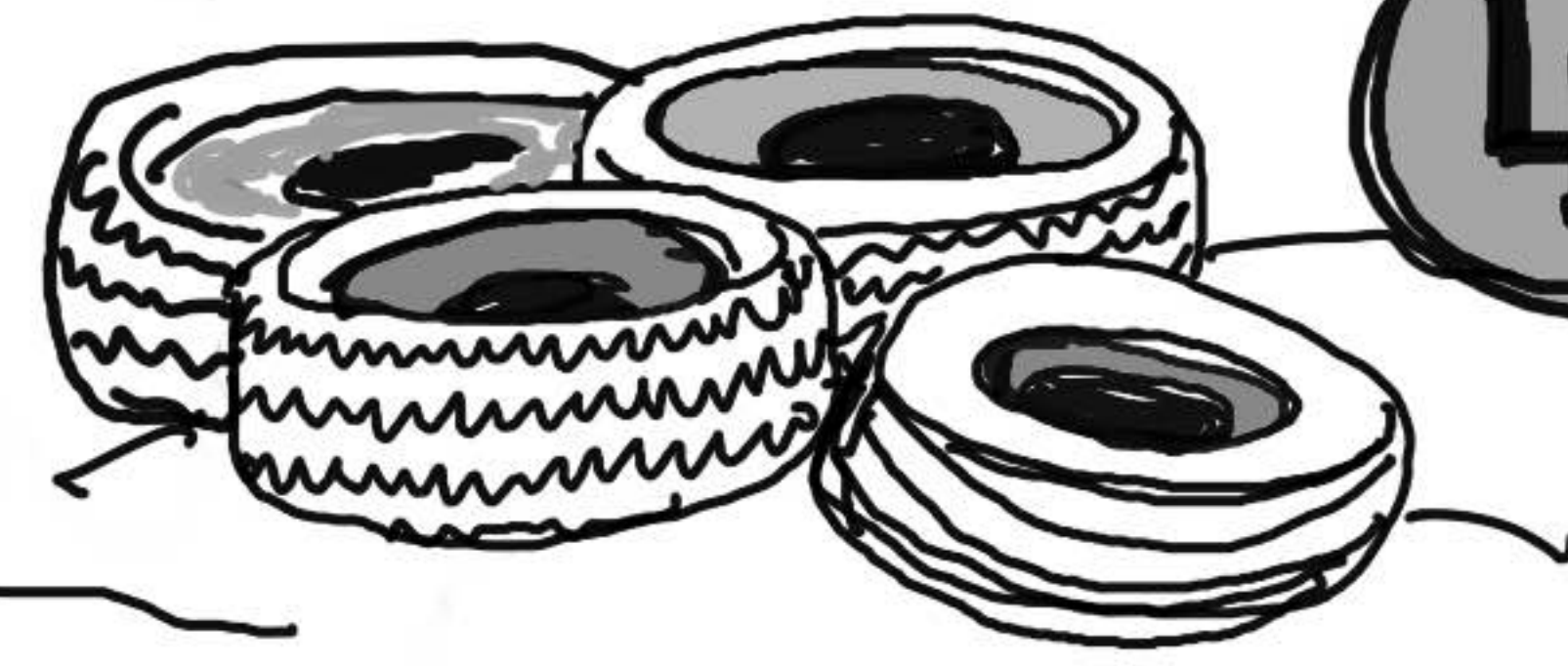
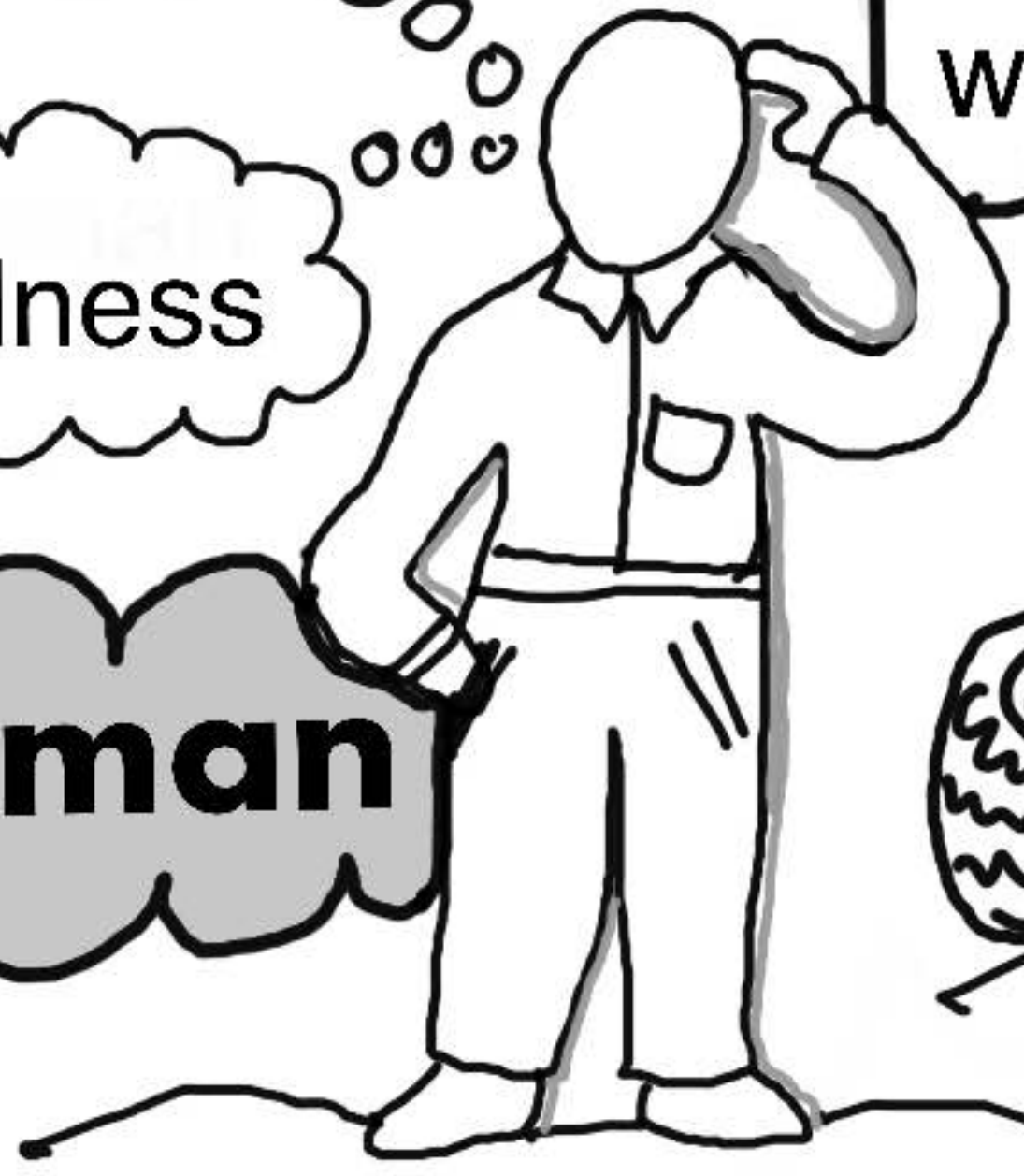


3

Plan carefully to implement

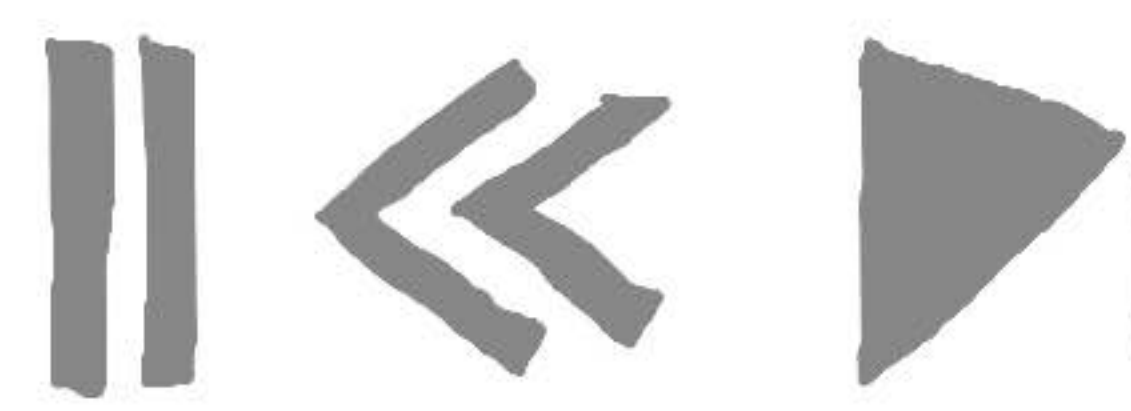


No ordinary man



4

Review how it worked and plan next steps



# Problem Solve